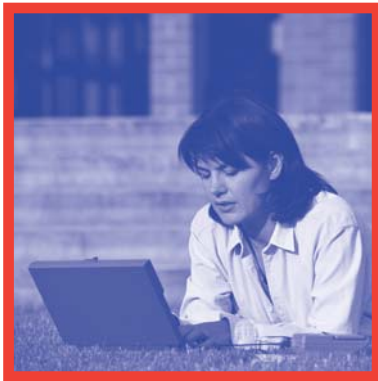


Calopus HE

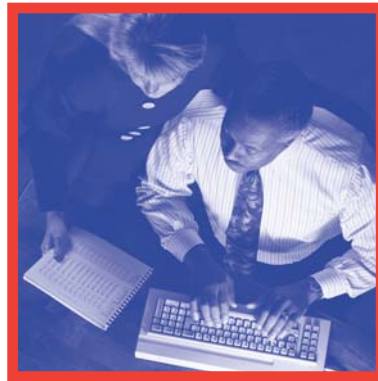


Interfacing between an ever expanding range of increasingly complex applications is one of the major challenges facing Higher Education IT Strategists, MIS Directors and Systems Administrators



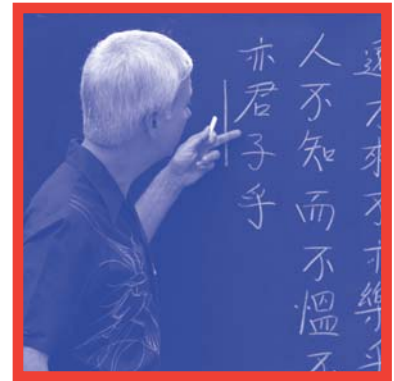
The Students are saying:

- We want services straight away
- We want to tell you only once
- We want to do it anywhere
- We want to know when its done



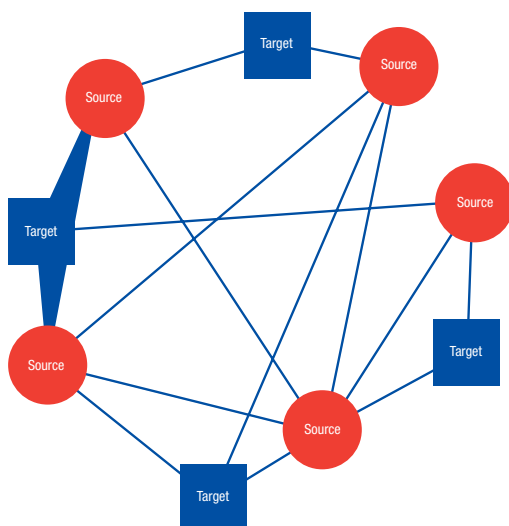
IT Departments are saying:

- You don't tell us what you really want
- We can't change the systems Interfacing takes time and effort
- We need to run everything else



The Faculties are saying:

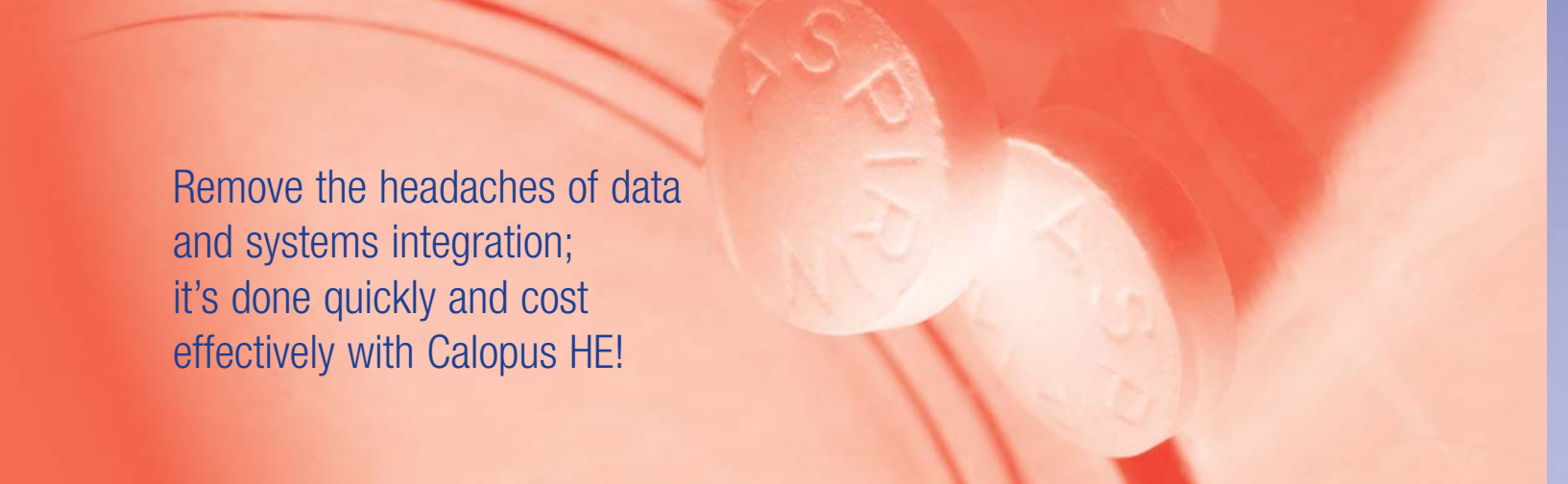
- We want it done our way
- We want it simple
- We want it low cost
- We want to know it will be done



It is commonplace to rely on a point-to-point strategy which:

- tends to grow over time as needs arise;
- is generally file based;
- fires at different times and is rarely coordinated;
- uses different mechanisms depending on the developer;
- is often not well documented and difficult to change;
- is not easily understood by the end users.

Just like the diagram above, the web of interfacing events that result from this approach consumes IT resources and leaves the IT department open to the risks of losing all knowledge of how an interface works if a critical staff member is no longer available.



Remove the headaches of data and systems integration; it's done quickly and cost effectively with Calopus HE!

Calopus HE is an Application Development Framework that allows disparate databases and systems to be synchronised without altering their structure or application logic. Information transfer can be combined concurrently across many systems. New business processes and forms applications can be rapidly and easily configured.

Calopus HE is a sophisticated development environment. It will significantly reduce development costs showing typical savings of 60% over conventional 'hand-built' interfaces. It achieves this by:

- Providing a clear and common approach to interface development;
- Reducing the amount of software and documentation deliverables, therefore streamlining your interface development processes;
- Reusing the data extracted from previous interfaces and also combining extracted information from multiple systems to a single target feed so that fewer interfaces are required;
- Allowing the definition of checks and transformations that can specify in a complex way, whether or not a target system is to be updated at any point in time;
- Allowing groups of similar items of information to be distributed at the same time to many target systems;
- Reducing the need for FTP and other file movements around corporate systems;
- Being easy to change and adapt to new systems and business processes;
- Auditing the changes in data as it happens, therefore providing a clear audit mechanism for any interface.

Calopus HE leverages your support staff. It significantly reduces ongoing support costs showing typical savings of 80% over conventional 'hand-built' interfaces. It achieves this by:

- Providing a single point of enquiry when issues are raised via the Calopus HE intranet application;
- Being able to proactively notify administrators and data owners of missing data or technical issues;
- Allowing Calopus HE support staff to directly review your interface definitions and resolve problems;
- Providing an audit of all data changes so that data issues can be more easily identified;
- Maximizing data quality and therefore reducing the number of support issues raised;
- Ensuring that information goes to all defined targets at the same time or none, thus reducing the need to manually synchronize data when a link to a particular system goes down;



Calopus HE is not a “Black Box” solution. It will significantly reduce target system administration costs showing typical savings of 50% over conventional ‘hand-built’ interfaces. It achieves this by:

- Providing information in a direct and timely manner and to the required specification of the target system;
- Providing increased data quality and better filtering of bad data to reduce inconsistencies within the target system;
- Proactively notifying the right staff (generally the data owner) when data is missing or identified as incorrect and therefore reducing the need for target system administrators to chase data owners;
- Allowing target system administrators to view their own data within the Calopus HE internet application so they can trace the progress of information and the audit history;

“...administration costs showing typical savings of 50% over conventional ‘hand-built’ interfaces.”

Calopus HE helps to refine your business processes. It significantly enhances your data capture and maintenance procedures and the understanding of interfacing requirements across departments. It achieves this by:

- Forcing data owners and target administrators to define and review their procedures and requirements so that appropriate rules, tests, transformations and timings can be defined within the Calopus HE Interface Designer tool to fully support all aspects of your Institution;
- Configuring workflows and forms to capture or correct common data inconsistencies;
- Allowing information from one source to be send to many target systems at the same time, thus making sure that the impact of changing source data is fully considered for all relevant target systems at the design stage.
- Reducing the risks associated with the system integration aspects of a data integration or ‘package’ installation project by enabling the early establishment of systems integration methods on current systems that will readily and simply transfer to any new system at the appropriate time through the utilization of proven methods, tools and documentation rather than having to construct bespoke solutions and associated methods at a time when resources may be scarce.

Calopus HE has a rich set of inbuilt core features which combine to provide an integrated, common design and runtime environment.

Calopus HE applications gain benefit from a standard and secure infrastructure where development effort, costs and timescales are minimised



Just like the mythical creature on which the product name is based, Calopus System enables you to cut through the “dense undergrowth”

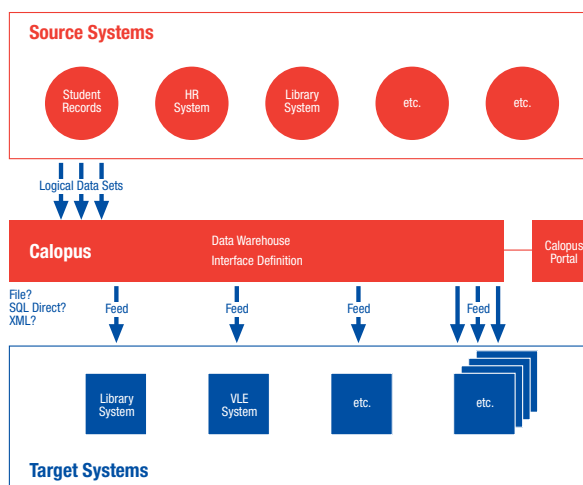
of developing an application by providing you with the tools to quickly get you through to the other side.

Features include:

- Fully-featured web forms
- Security, Audit, Session Management and Tracking
- Dynamic Menu Definition
- Binary Document and Image Management
- Multiple Language Display Support
- User Definable Extra Fields
- Error Handling and Notification
- Display and other preferences
- Batch scheduling, submission and tracking
- Interface definition, submission and tracking
- Workflow and Business Process Management
- Portal Application Configuration with eCommerce features

Calopus HE is a sophisticated Application Development framework designed to significantly reduce the amount of time spent on systems integration, business process delivery, development and maintenance.

Would you like a more elegant approach to interfacing your systems?



The Calopus Approach to Interfacing

- Applies a common approach to interfacing across all systems thereby reducing system maintenance
- Is more easily understood by the end user through the Interface Designer tool
- Maximises consistency and timeliness of data transfer
- Remains flexible to changing business procedures
- Provides secure visibility of transferred data and a full audit trail
- Is highly cost effective with rapid ROI, usually within 12 months
- Is designed by the academic sector for the academic sector
- Has a track record of success at Leeds Metropolitan University



Flexibility to changing business requirements is key to providing effective IT solutions that can stand up to the tests of time.

Calopus takes the approach that business processes should be the key driver for the functionality that IT systems deliver.

There are many ways of delivering these business processes to the end user and many technologies that may be employed to facilitate this.

Calopus is a development environment that uses Meta Data to configure interfaces, workflows, forms applications, extranets and portals. This means that as your business changes, Calopus is uniquely placed to respond to this change through adapting its configuration, rather than through wholesale redevelopment of more application code.

Portal applications are becoming an essential component of the drive to provide effective customer service.

No matter how new or advanced your internal administration systems are, eventually these often disparate systems will need to form part of a coherent customer service system.

Calopus provides the ability to configure, brand and maintain portals with a diverse range of features such as self-service, eCommerce, online support and product or asset inventories.

With the ever increasing expectations of both students and staff, portal applications need to be flexible and have easy access to corporate information. Calopus is designed to deliver a cost effective solution to facilitate these needs.

Calopus was created 4 years ago using the experience of over 13 years of Oracle based systems development.

It is now in it's fourth generation and has a set of features that are now stable and proven in industry.

Calopus Installations:

Can be deployed on Oracle 8.1.7 or higher versions;

Use Oracle HTTP Server to deliver web content;

Can also be integrated with Oracle 9iAS Application Server;

Are built primarily in PL/SQL;

Use Oracle's ability to communicate with most other technologies;

Are completely database driven; Require no file server;

Require no compilation of source code; Are effective immediately;

Are deployed solely through a Web Browser.

What do the Customers say?

We asked some of our existing clients to quantify the benefits that they have enjoyed since adopting Calopus HE as their primary integration tool. This is what they summarized:

- Consistent development environment leads to consistent interfaces
- Greatly reduced lead time and costs of development
- Reduced costs dealing with inconsistent/incorrect data
- Student data accuracy of more than 97%
- Shorter lead times getting information shared throughout the Organisation
- Greater agility in responding to changes introduced by business change or upgrades
- University ROI in less than twelve months
- Faster resolution of student problems leading to greater customer satisfaction

Calopus HE customers include:

Dublin Institute of Technology
Leeds Metropolitan University
The University of Manchester
University of Paisley
Royal Holloway University of London
Sunderland University

“Calopus, as a data warehouse, allows me as WebCT administrator, to quickly and easily look up data about students and their modules as well as to control the times at which WebCT receives data feeds. This allows me to both verify the integrity of the data and to manage performance loading on the system”

**Hannah Walsh, WebCT Administrator,
Leeds Metropolitan University**

“Calopus is one of those rare products that you only come across once in a while. It does more than it says on the tin for less than you think. For me, with responsibility for the University Managed Learning Environment, Calopus is the glue that holds it all together”

**John Heap, Director of Learning Information Systems,
Leeds Metropolitan University**

“Good value compared with the alternatives: similar cost but less completion risk than an ‘in-house’ solution, less expensive and less ‘black box’ than a wholly proprietary solution”

**Ian Castleton, Administrative Computing, Royal
Holloway University of London**

“Calopus is helping us in our critical data migrations between our Ingres and Banner Oracle databases. We also have planned to use it to facilitate data transfer between various existing ancillary (Access-based) databases and our Ingres database. For the future, we anticipate Calopus assuming the main role in enabling effective systems integration between our core systems including Student Information, Finance, VLE and HR systems”

**Anne Strachan, Application Development Manager,
University of Paisley**

“Here at Manchester, we had to meet the challenge of combining two sets of University systems with over 1 million records into one coherent framework. Calopus HE has given us a common and controlled way of achieving this, and with the support of Calopus staff, we have made significant progress in a relatively short time”

**Wendy Crewe, Interface Management Project
Manager, The University of Manchester**



How to contact us

0845 686 0500

info@calopus.com

www.calopus.com

RCL SoftNet Ltd
Suite 102
15 Queen Square
Leeds
LS2 8AJ

Tel: 0845 686 0500
Email: info@calopus.com
Web: www.calopus.com